

Description:

Sentry Sprinklers Model **PI-6012** is a Vertical Indicator Post that is installed in combination with a buried non-rising stem gate valve to indicate the buried valve opening position. The post sight window indicates whether the valve is in the open or shut position. The post can be field adjusted for the required depth of the buried valve. The Indicator Post is anti-corrosion with 10 mil (250µ) of fusion-bonded epoxy (FBE) coating on both inside & outside. All other components are made of corrosive resistance materials.



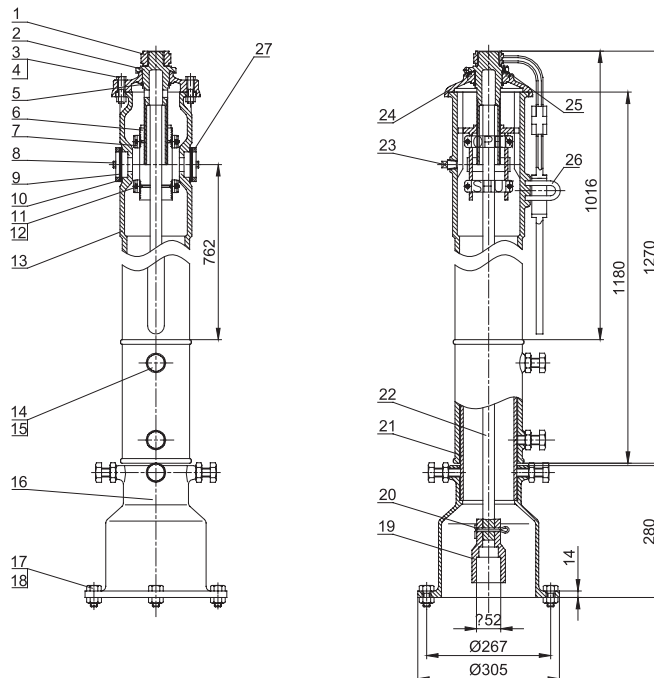
Model **PI-6012**



Features:

- Suitable for valve sizes 4"-12".
- Meets all requirements for UL789 and FM1110.
- Easy field adjustment 34 1/4".
- Epoxy coated inside & outside.
- Ground Level Line.

Dimensions:



Material List:

ITEM	NAME	MATERIAL
1	Locking wrench	ASTM A126B
2	Operating nut	ASTM A351 CF8
3	Hex cap screw	ASTM A105
4	Hex nut	ASTM A105
5	Snap ring	AISI 066
6	Target carrier nut	ASTM A351 CF8
7	Target	ASTM B108
8	Hex cap screw	ASTM A105
9	Window glass	LEXAN-UN
10	Window glass gasket	PTFE
11	Hex cap screw	ASTM A105
12	Hex nut	ASTM A105
13	Body	ASTM A536
14	Hex cap screw	ASTM A105

ITEM	NAME	MATERIAL
15	Hex nut	ASTM A105
16	Base flange	ASTM A126B
17	Hex cap screw	ASTM A105
18	Hex nut	ASTM A105
19	Crane coupling	ASTM A536
20	cotter pin	AISI 304
21	Stand pipe	ASTM A53
22	Stem	AISI 1045
23	Plug	AISI 304
24	Cover	ASTM A126B
25	Cross recessed countersunk head screw	ASTM 304
26	Locking nose	ASTM 307 B
27	Window cover	ASTM A307B
-	-	-

Field Adjustment:

1. Remove the top section from the top of the Indicator Post assembly.
2. Cut the required length off the bottom of the Standpipe in order to line up with the Standpipe Ground Line mark.
3. Set the "OPEN" and "SHUT" targets for the appropriate valve size.
4. Reattach the top section to the top of the Indicator Post assembly.
5. Design and dimensions are subject to change without notice.