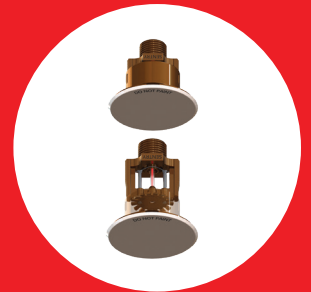
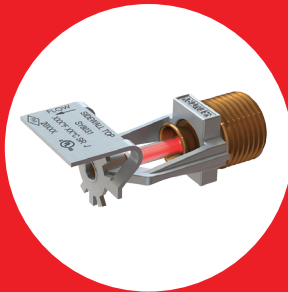


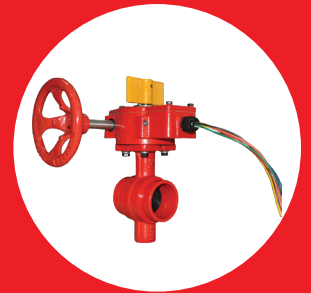
Sentry Sprinklers®

Fire Protection

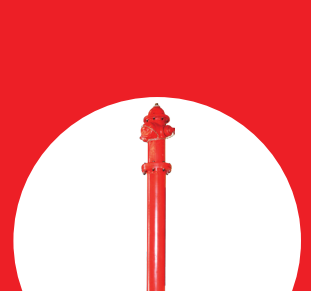
Sprinklers



Alarm Check Valves



Butterfly Valves



Check Valves



Deluge Valves

Gate Valves

Fire Hydrants



10967 Lake Underhill Rd, Unit 103 Orlando, Florida U.S.A.

Tel:+1-407-482-9282 Fax:+1-407-482-9476

www.SentrySprinklers.com

SPRINKLERS APPLICATION CHART

LIGHT & ORDINARY HAZARD								
STANDARD RESPONSE 135°F/155°F/175°F/200°F	1/2" NPT NOMINAL 5.6 K-FACTOR							
	UPRIGHT	PENDENT	HORIZONTAL SIDEWALL	HORIZONTAL SIDEWALL EXTENDED	VERTICAL SIDEWALL	CONCEALED	CONVENTIONAL	
	SY8011	SY8021	SY8031	-	-	SY8051*	-	
	SY8111	SY8121	SY8131	-	SY8141	SY8151#	SY8101	
	3/4" NPT NOMINAL 8.0 K-FACTOR							
	SY1211	SY1221	SY1231	-	-	-	-	
	* FIXED DEFLECTOR, # DROP-DOWN DEFLECTOR							

LIGHT & ORDINARY HAZARD								
STANDARD SPRAY QUICK RESPONSE 138°F/158°F/175°F/200°F	1/2" NPT NOMINAL 5.6 K-FACTOR							
	UPRIGHT	PENDENT	HORIZONTAL SIDEWALL	HORIZONTAL SIDEWALL EXTENDED	VERTICAL SIDEWALL	CONCEALED	CONVENTIONAL	
	SY8012	SY8022	SY8032	-	-	SY8052*	-	
	SY8112	SY8122	SY8132	-	SY8142	SY8152#	SY8102	
	3/4" NPT NOMINAL 8.0 K-FACTOR							
	SY1212	SY1222	SY1232	-	-	-	-	
	* FIXED DEFLECTOR, # DROP-DOWN DEFLECTOR							

EXTENDED COVERAGE - LIGHT HAZARD							
EXTENDED COVERAGE QUICK RESPONSE 135°F/155°F/175°F/200°F	1/2" NPT NOMINAL 5.6 K-FACTOR						
	UPRIGHT	PENDENT	HORIZONTAL SIDEWALL	HORIZONTAL SIDEWALL EXTENDED	VERTICAL SIDEWALL	CONCEALED	CONVENTIONAL
	-	-	-	SY8172	-	-	-
	3/4" NPT NOMINAL 8.0 K-FACTOR						
	-	-	-	SY1272	-	-	-

STORAGE APPLICATION							
STORAGE APPLICATION STANDARD SPRAY 135°F/155°F/175°F/200°F	3/4" NPT NOMINAL 11.2 K-FACTOR						
	UPRIGHT	PENDENT	HORIZONTAL SIDEWALL	HORIZONTAL SIDEWALL EXTENDED	VERTICAL SIDEWALL	CONCEALED	CONVENTIONAL
	SY1711	SY1721	-	-	-	-	-

STORAGE APPLICATION							
STORAGE APPLICATION QUICK RESPONSE 135°F/155°F/175°F/200°F	3/4" NPT NOMINAL 11.2 K-FACTOR						
	UPRIGHT	PENDENT	HORIZONTAL SIDEWALL	HORIZONTAL SIDEWALL EXTENDED	VERTICAL SIDEWALL	CONCEALED	CONVENTIONAL
	SY1712	SY1722	-	-	-	-	-



WET ALARM VALVE MODEL ACV-300



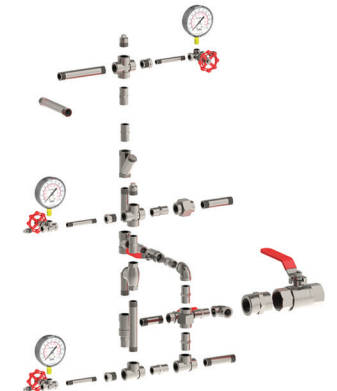
ACV-300



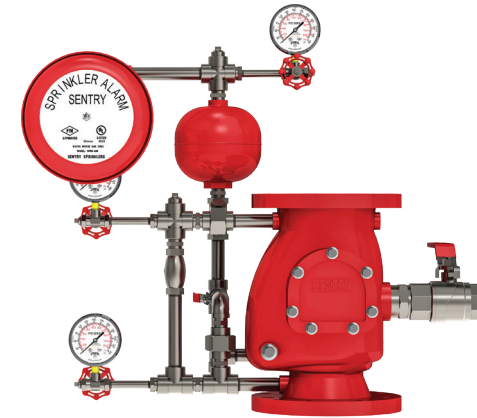
WMG-300



RC-300



Trim



ACV-300-FF



Flange-By-Groove (FG)



Groove-By-Flange (GF)



Groove-By-Groove (GG)

Ductile Iron Body, Light Weight, EPDM Clapper Facing, SS304 Trim, FBE AWWA C550. 300 PSI. Pre-Assembled Variable and Constant Trim.

HYDRANT



DH68



WH68 Monitor Flange



WH68

GATE VALVES

OSY-6000

OSY-6000-FF
- FLANGE
- FLANGE
- 2"-12"



OSY-6000-FG
- FLANGE
- GROOVE
- 2"-12"



OSY-6000-FMJ
- FLANGE
- MECHANICAL JOINT
- 2"-12"



OSY-6000-GG
- GROOVE
- GROOVE
- 2"-12"



OSY-6000-MJMJ
- MECHANICAL JOINT
- MECHANICAL JOINT
- 2"-12"



OSY-6000-FF
- FLANGE
- FLANGE
- 14"-24"



INDICATOR POSTS

Wall Type



PI-6030 (4"-12")

Underground Type



PI-6012 (4"-12")

Underground Type

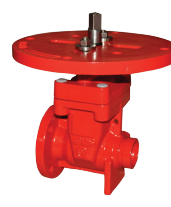


PI-6024 (14"-24")

NRSP-6000



NRSP-6000-FF
- FLANGE
- FLANGE
- 2"-12"



NRSP-6000-FG
- FLANGE
- GROOVE
- 2"-12"



NRSP-6000-FMJ
- FLANGE
- MECHANICAL JOINT
- 2"-12"



NRSP-6000-GG
- GROOVE
- GROOVE
- 2"-12"



NRSP-6000-MJMJ
- MECHANICAL JOINT
- MECHANICAL JOINT
- 2"-12"



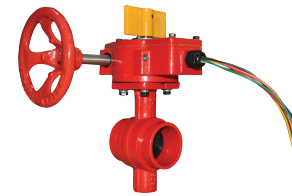
NRSP-6000-FF
- FLANGE
- FLANGE
- 14"-24"

• Ductile Iron Body, Light Weight • EPDM Encapsulated Ductile Iron Wedge • Plug & Tap Bosses • 300PSI
• Field Adjusted • Ground Level Line • Casted 12" Face Plate (Wall Type) • SS304 BOLTS & STEM. FBE AWWA C550

BUTTERFLY VALVES 3000

DUCTILE IRON 1"-2"

GROOVE
GD-3000

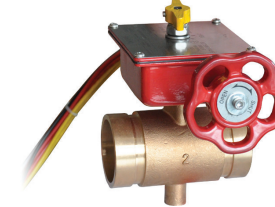


THREAD
TD-3000



BRONZE 1"-2"

GROOVE
GB-3100



THREAD
TB-3100



DUCTILE IRON 2"-12"

GROOVE
G-3000-GG



LUG
L-3000-LL



WAFER
W-3000-WW



• Ductile Iron Body • EPDM Coated Disc • Indicator Type (Indoor/Outdoor) • 1"-2" 175 PSI, 2"-12" 300 PSI • FBE PER UL1091 & FM1112

SWING CHECK VALVE 2"-12"

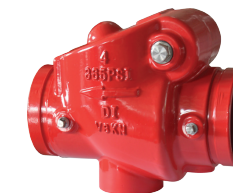
FLANGE
7000-FF



GROOVE
7100-GG



GROOVE
7200-GG



WAFER
7300-WW



EPDM Coated Clapper • Riser Type • Horizontal / Vertical Type • Flange & Wafer 300 PSI Groove 365 PSI.

ACCESSORIES



SYVB62 Valve Box



ARV-2000



2.5" BS336 ADAPTER



5" STORZ CONNECTION



Sprinkler Cabinet

Sentry Sprinklers®

F i r e P r o t e c t i o n

10967 Lake Underhill Rd, Unit 103 Orlando, Florida U.S.A.

Tel:+1-407-482-9282 Fax:+1-407-482-9476

www.SentrySprinklers.com